



PENSHURST PLACE
AND GARDENS



TOY MUSEUM QUIZ

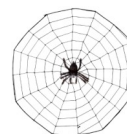
Have a look round and you will find a lot of the answers on the cards in the display cabinets.

What can you see inside the desk as you go into the Toy Museum?

It is 170 years old.

Case 2

What is painted on a cobweb?



Name one of the songs on the music sheet



Case 3

What is the name of the toy man in this case?

Punch & Tracey/Julie/Angela/Judy? Which is the missing name?

Case 4

What were the dolls' faces made of?

What was the dolls' hair made of?

Case 5

How many wigs does the Japanese doll have?

.....



Case 6 Name 5 pairs of animals which went into the Ark

.....

Display cabinet next to Case 6

Can you see a musical instrument in this cabinet? What is it?

In the painting above, how many children are playing (look at the notes below the painting) and can you name one or two games they are playing?

.....

Case 7 What game do you play with flowers?



Dolls' House - Find the kitchen—does it have a tap? **Yes/No**



Big dolls' house opposite chimney

Which animal does the lady in kitchen have on her knee?

Case 9

How many trains can you see?



Case 10

What is the small dinner service made out of?

Is there a telephone in this case? Can you draw it?

Case 13

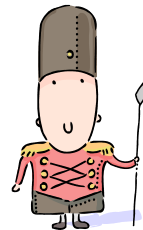
Who was the Teddy Bear named after?

The Queen of she made some tarts. Fill in her name.



Case 16

What are the soldiers made of?



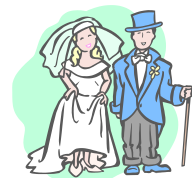
Case 17

Which toy belonged to Philip Sidney?

What was the original name of Mickey Mouse?

What is happening on the bottom shelf of this case?

.....



Case 19

What is the name of the Georgian doll?

**French Horse Tricycle – it's hanging from the ceiling.
Where are the pedals on this very old tricycle?**

.....



If you need the answers, ask the Guide in the Toy Museum

PENSHURST PLACE & GARDENS, PENSHURST, TONBRIDGE, KENT TN11 8DG | TEL: 01892 870307 |
FAX: 01892 870866 | EMAIL: enquiries@penshurstplace.com | WEBSITE: www.penshurstplace.com